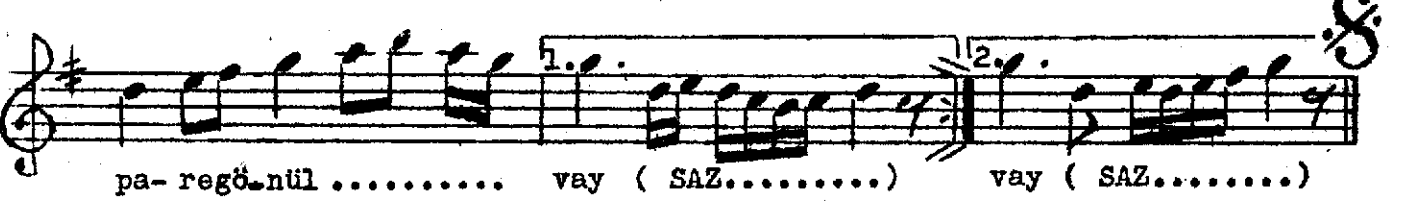
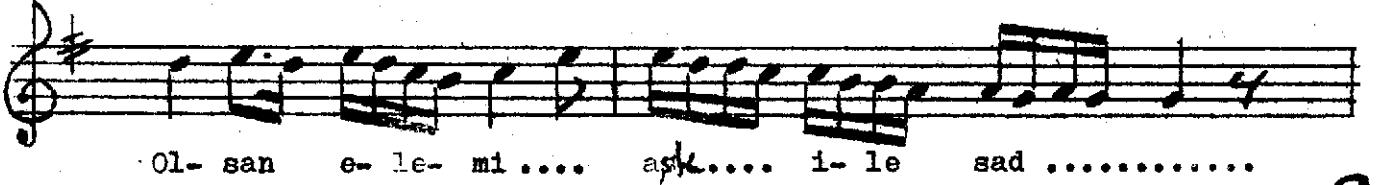
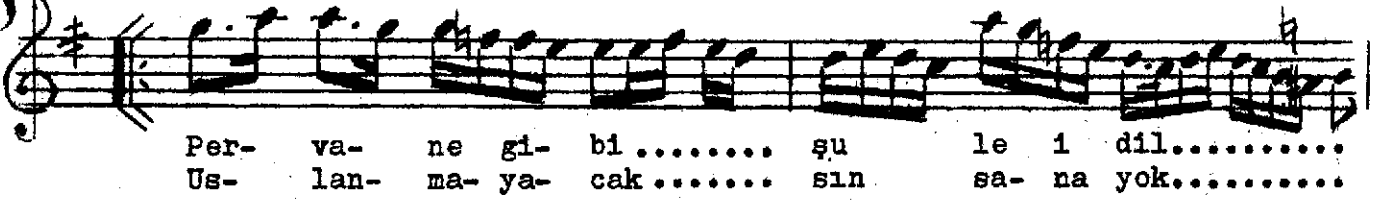


MAHUR ŞARKI -

AKSAK

(Düştün yine bir şuh-ı sitemkâre...)

LÂTİF AĞA



DÜŞTÜN YİNE BİR ŞUH-İ SİTEMKARE GÖNÜL VAY  
PERVANE GİBİ ŞULE-İ DILDARE GÖNÜL VAY  
OLSAN ELEM-İ AŞK İLE SAD-PARE GÖNÜL VAY  
USLANMAYACAKSIN SANA YOK ÇARE GÖNÜL VAY